

Anti-CD46 hlgG1 Antibody(YS5FL)

Product information

GM-30132AB-10	10 µg
GM-30132AB-100	100 µg
GM-30132AB-1000	1 mg

Antibody Information

Species Reactivity	Human;
Clone	YS5FL
Source/Isotype	Monoclonal human IgG1, κ
Application	Flow cytometry
Specificity	Detects CD46
Gene	CD46
Other Names	AHUS2, MCP, MIC10, TLX, TRA2.10
Gene ID	4179 (human); 102146832 (Cynomolgus)
Background	The CD46 gene plays a critical role in complement regulation, immune evasion, and metabolic regulation. Its mutations or abnormal expression are closely associated with various diseases, such as atypical hemolytic uremic syndrome (aHUS), autoimmune diseases, and cancer. Antibodies targeting CD46 (e.g., TRA2.10) have broad applications in basic research and clinical studies, including detecting protein expression, investigating complement regulatory mechanisms, and exploring cancer immunotherapy strategies. Additionally, CD46 may be indirectly linked to molecules such as MIC10 and TLX through metabolic or signaling pathways, providing new directions for future research.
Storage	Store at 2-8°C short term (1-2 weeks).Store at ≤ -20°C long term. Avoid repeated freeze-thaw.
Formulation	Phosphate-buffered solution, pH 7.2.
Endotoxin	< 1 EU/mg, determined by LAL gel clotting assay

Version:3.1

Data Examples

Flow cytometry

H_CD46 CHO-K1 Cell Line (Catalog # GM-C19165) was stained with Anti-CD46 hlgG1 Antibody(YS5FL) (Catalog # GM-30132AB) or isotype control antibody, followed by anti-Human IgG APC-conjugated Secondary Antibody.

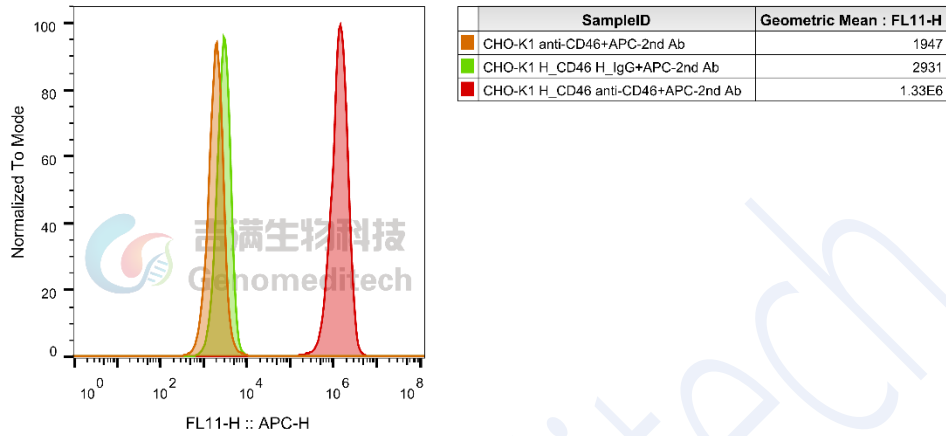


Fig. FACS

Flow cytometry

Cynomolgus_CD46 CHO-K1 Cell Line (Catalog # GM-C34403) was stained with Anti-CD46 hlgG1 Antibody(YS5FL) (Catalog # GM-30132AB) or isotype control antibody, followed by anti-Human IgG APC-conjugated Secondary Antibody.

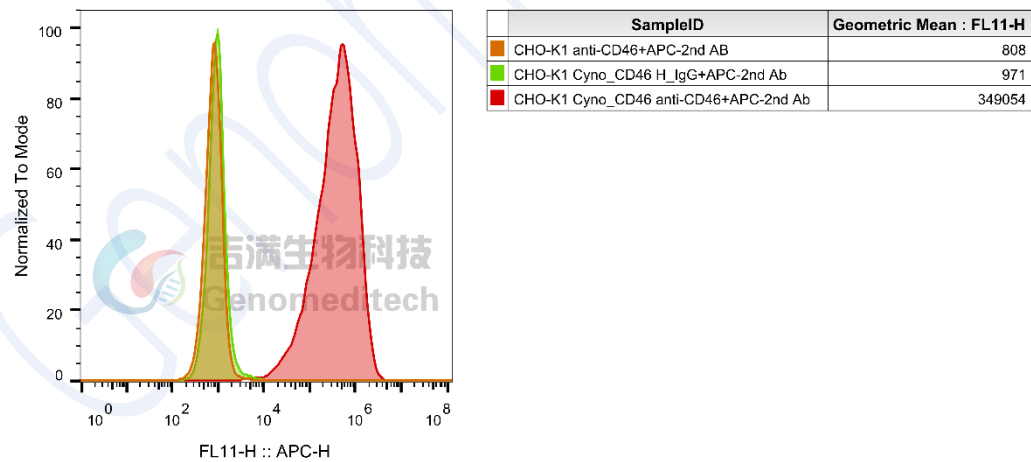


Fig. FACS